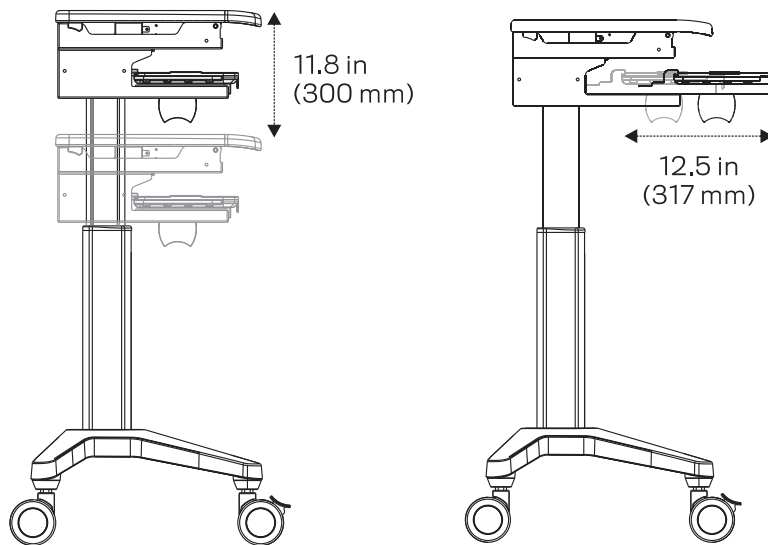


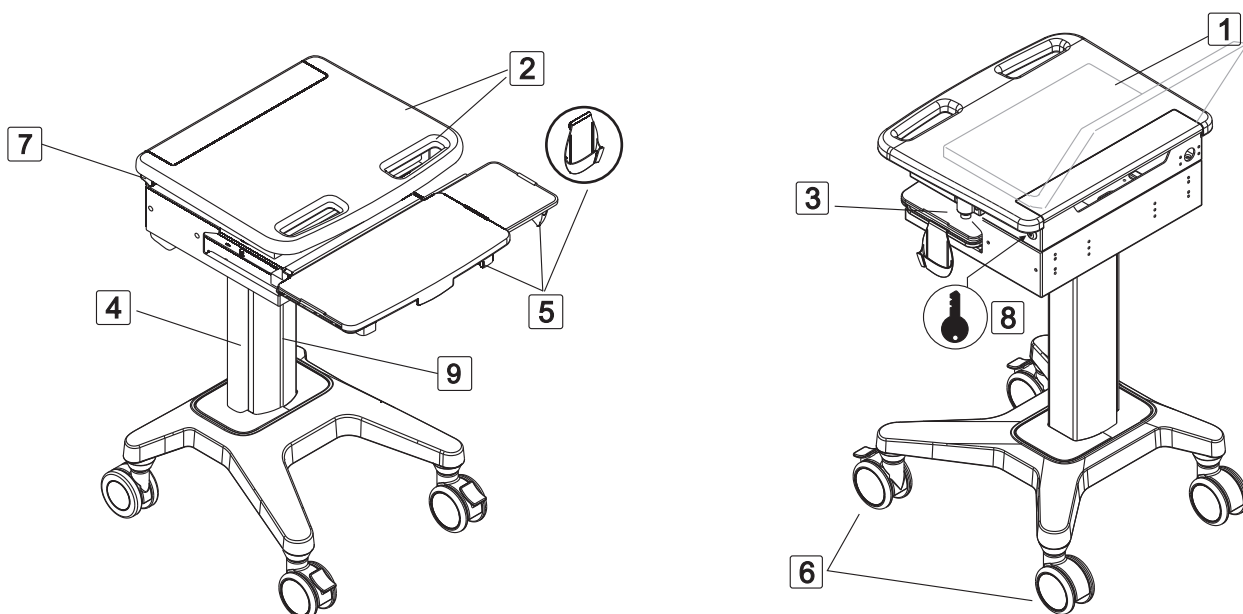
TNG-H-NP

Adjustments

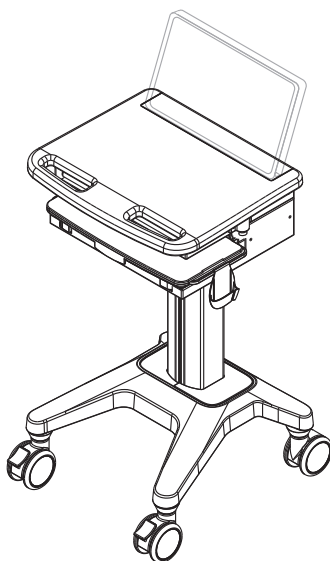


Features

- (1) Laptop holder
- (2) Worksurface with front handle
- (3) Lift brake release (release brake to raise or lower the cart)
- (4) Cable management
- (5) Sliding keyboard tray with mouse holder and sliding mouse tray
- (6) Casters (2 rear non-locking and 2 front locking)
- (7) Latch
- (8) Key and lock hole
- (9) Track for accessories



Loading Capacity



Weight capacity  2.2 – 11 lbs. (1– 5 kg)

Laptop/monitor  11 lbs. (5 kg)

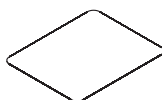
Checklist

①



X1

②



X1

③



X2

④

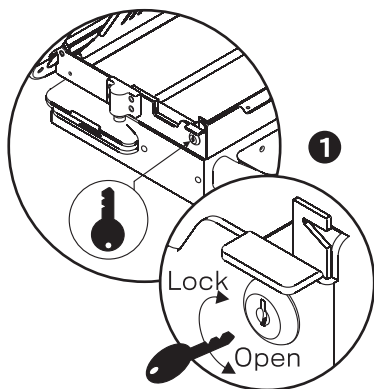


X2

Assembly Instructions

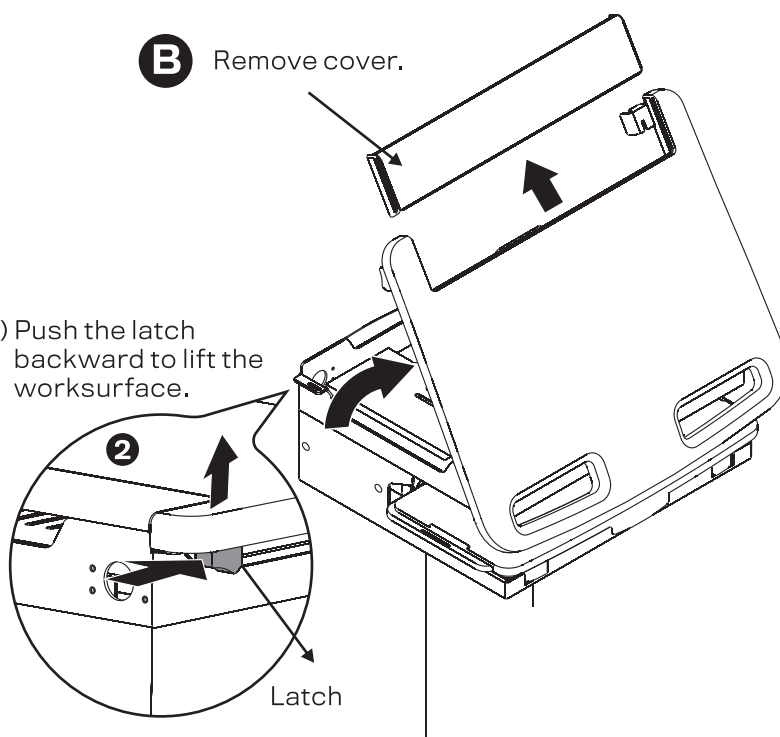
Step 1 Open Worksurface

- A** (1) Unlock the worksurface by turning the key counterclockwise.



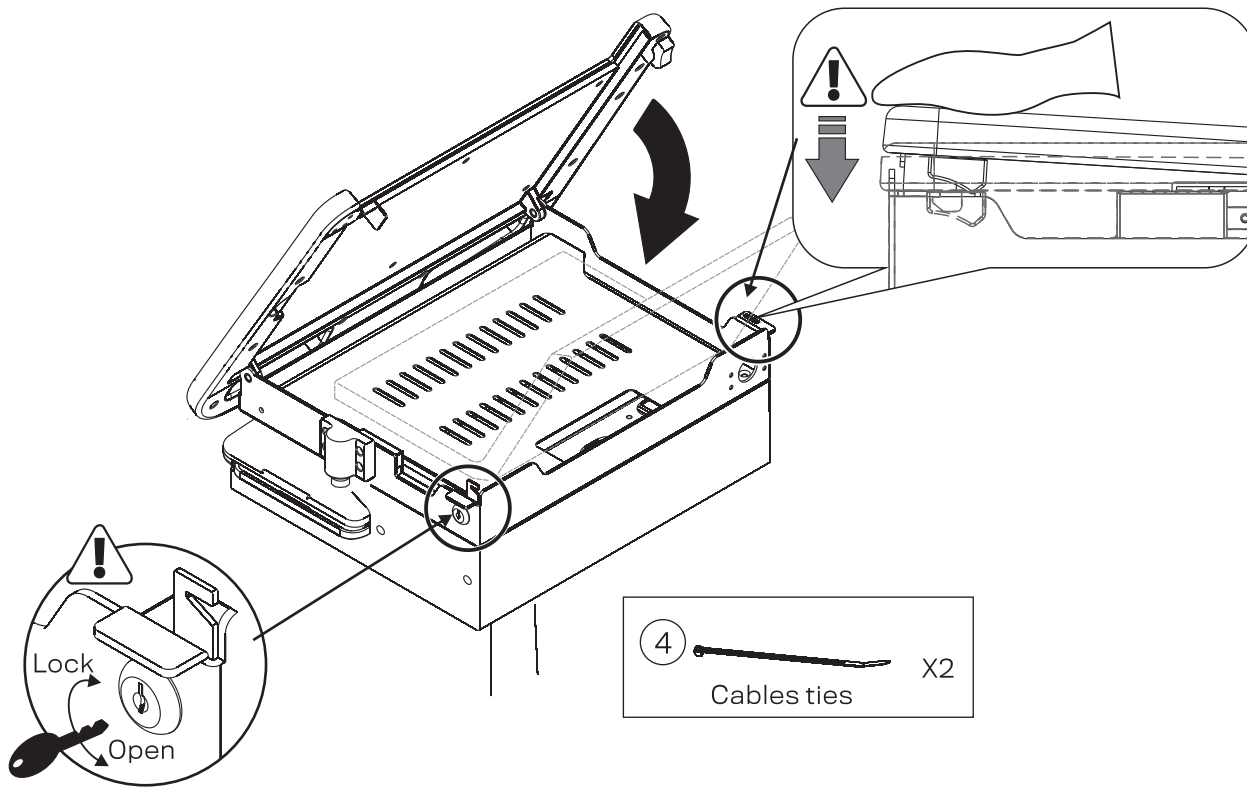
- B** Remove cover.

- (2) Push the latch backward to lift the worksurface.

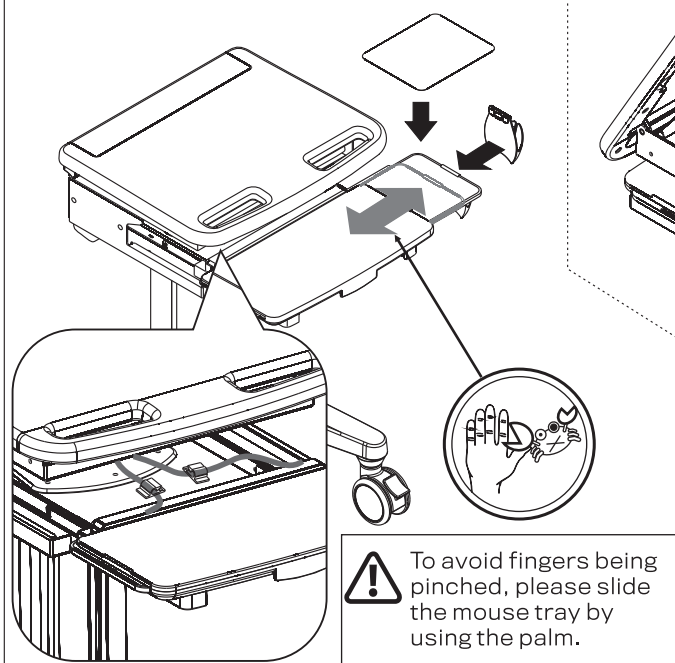


Step 2 Install Laptop

Set the laptop into the compartment and then replace the worksurface. Please note the worksurface must be locked and the latch must be pushed forward before moving this cart.

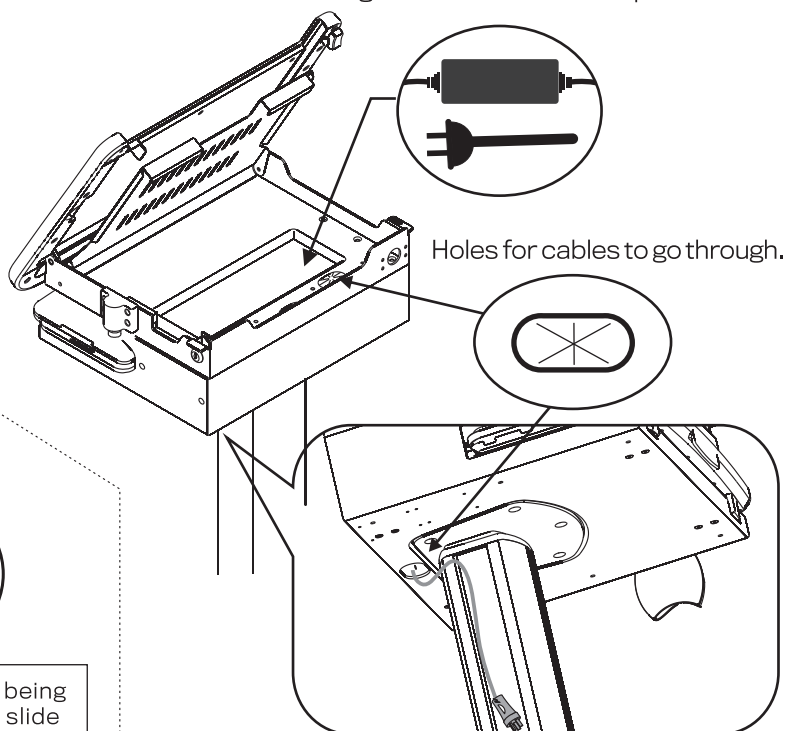


Step 3 Add Mouse Pad and Holder



Step 4 Store and Route Cables

Storage for cables and adapters.



NOTE: The worksurface must be secured with the knob and latch in the down position before moving the cart.

Adjustment and Operation

a.

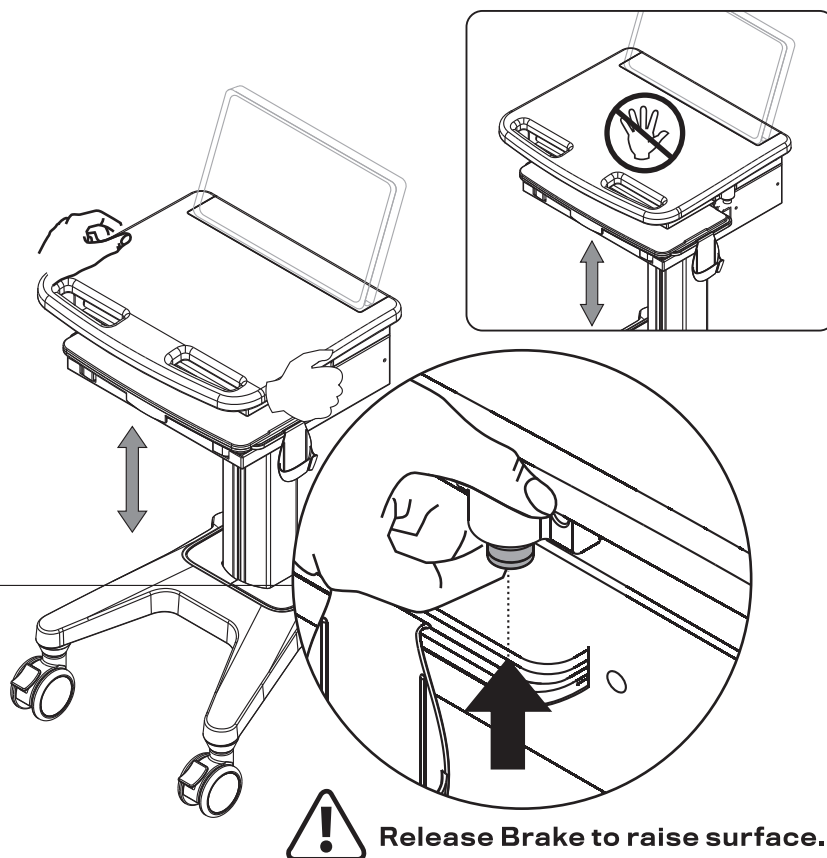
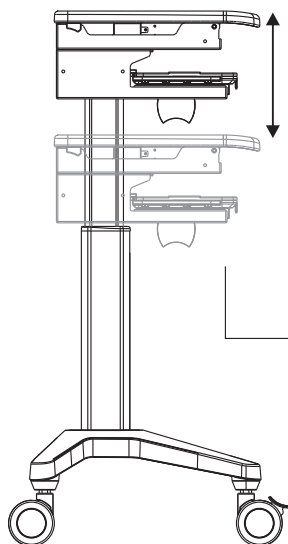


Do not raise height of worksurface while empty. Doing so may cause the worksurface to rise rapidly.



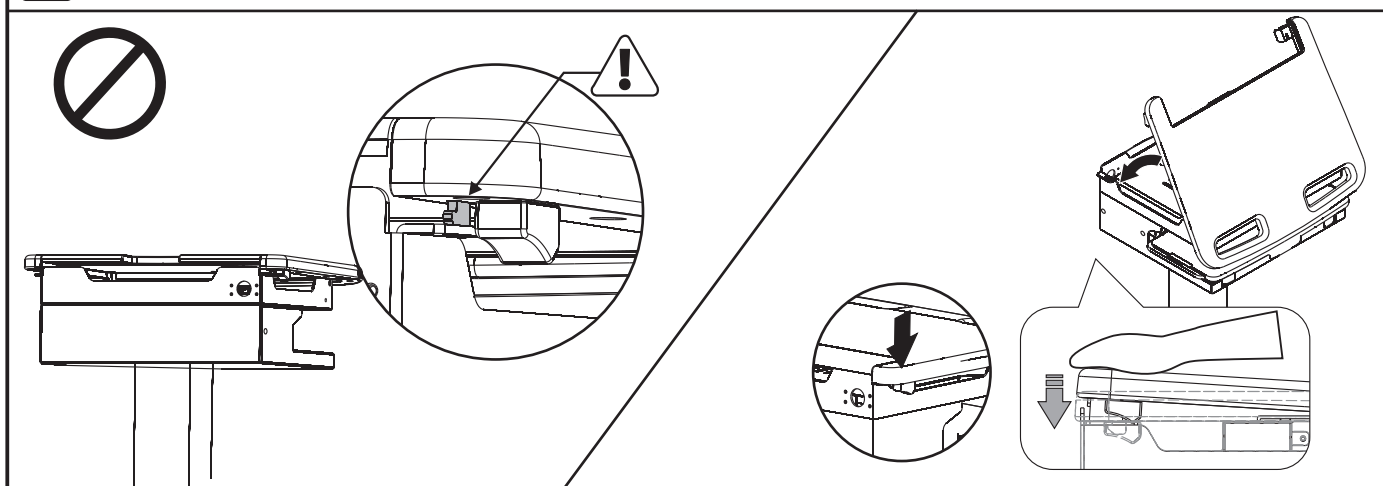
NOTE:

Always adjust worksurface height with both hands on either side of worksurface as shown. Do not push on the center of the worksurface to lower it. Only adjust worksurface height while the cart is stationary.

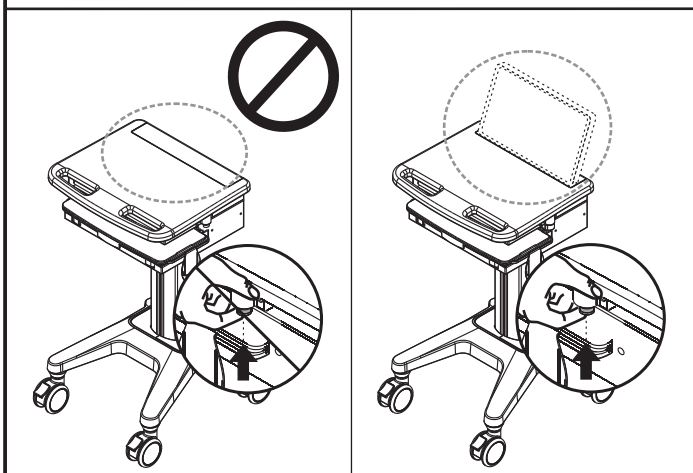


Summary of Warnings

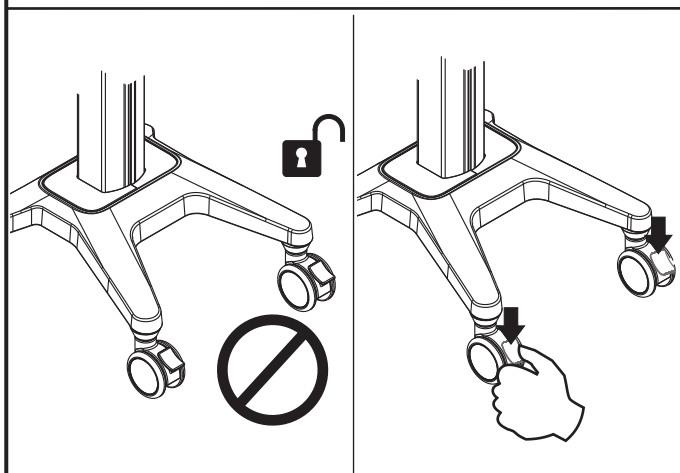
! WARNING Please notice that the latch must be pushed forward after replacing the worksurface.



! WARNING
Mechanism can rise quickly with no equipment in place. User equipment must be properly installed prior to height adjustment.



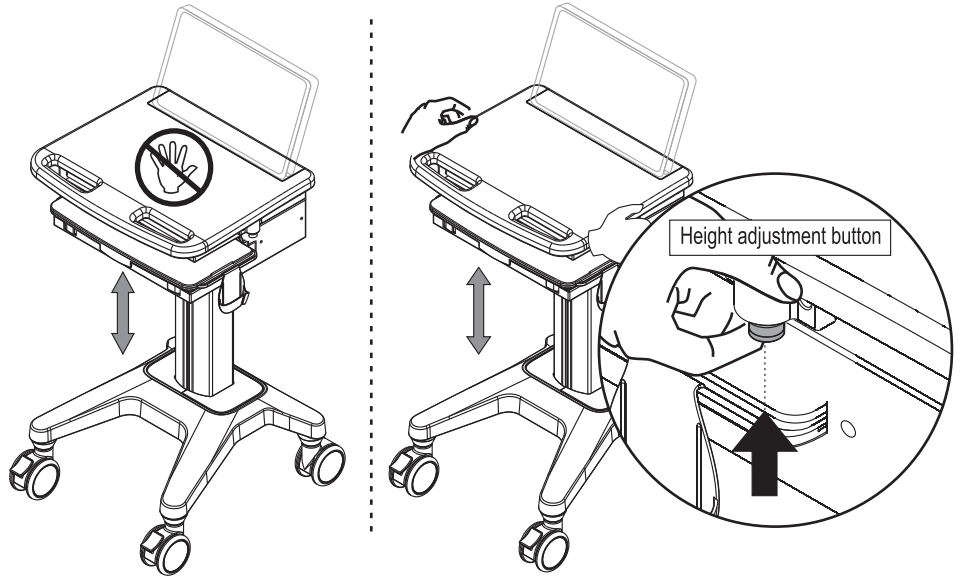
! WARNING
Brake both front casters when the cart is stationary.



! WARNING

NOTE:

While releasing brake to move the height of worksurface higher or lower, please put two hands on both sides of worksurface as shown. Do not push the center of worksurface to lower the height.



! WARNING

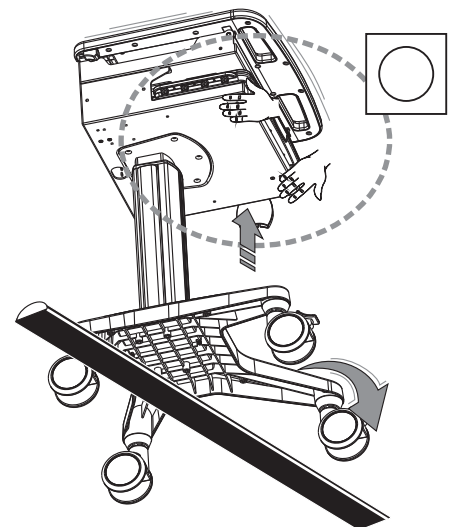
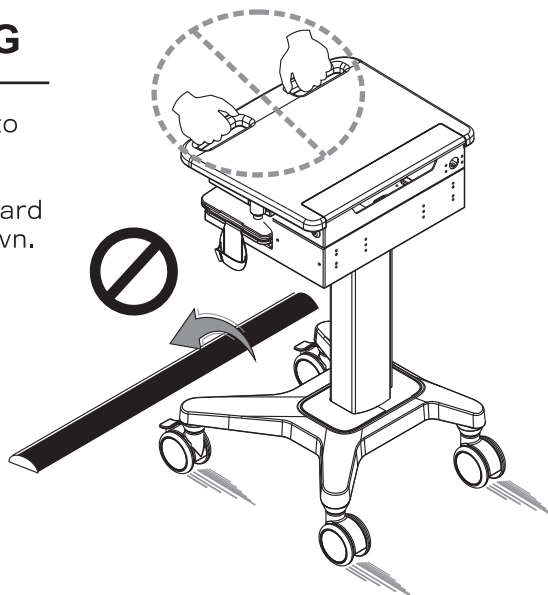
Do not press on keyboard or mouse trays.



! WARNING

When the cart needs to go across obstacles, please lift the cart up from bottom of keyboard compartment as shown.

Do not lift up from handles.



Maintenance

All cart maintenance must be carried out at least once a month by a professional technician.

Cleaning Warning

▲ Because the cart is under the environment of electrical equipment,
do not use flammable cleansers.

- (1) Before cleaning the cart, please confirm all electrical equipment is unplugged.
- (2) Please confirm the cart is entirely dry before plugging the power into socket.
- (3) While cleaning the cart, please use damp cloth to wipe off the superficial cleansers until completely dry.
- (4) Do not use in moist environment. Do not allow liquids to enter into the cart.
- (5) To avoid surface finish being damaged, do not use any abrasive materials when cleaning.
- (6) Before using any cleanser on the cart, please test it on a small section.

Please be cautioned that these guidelines can not ensure infection control.
Please consult hospital's infection control consultant for cleaning advice.

Cleaning Recommendations

- (1) Please use non-abrasive or diluted products to clean plastic components such as soap, water and diluted alcohol.
- (2) If there are spots of pen or marker on the cart's surface, a soft cloth with 91% isopropyl alcohol is suggested for cleaning.
- (3) If there are iodine spots on the cart's surface, a soft cloth with above cleansers is suggested for cleaning.

The following chemicals are not recommended for cleaning the cart:

Abrasive cleansers, Acetone, Mineral spirits, Paint thinner or any other harsh or toxic chemicals.

Inspections

All cart inspections must be carried out at least once a month by a professional technician.

If the cart becomes damaged, stop operating this cart and contact us for further assistance.

Caster

To allow cart move as intended, please inspect the casters regularly and keep the cart away from destroyed and untidy ground.

The maximum weight of the cart is 88 lbs (40 kg).
(Loading limitation of accessories, please see at page 2.)

Fasteners

Do not over tighten fasteners, doing so can result in damage to components.

TROUBLESHOOTING

Cart is difficult to move

Ensure the two front locking casters are not locked.

Inspect whether there is any debris sticking to casters.

Worksurface height is difficult to adjust

1. If the lift mechanism is unable to raise or lower, ensure the lift brake is pressed completely.
2. Lift the worksurface up slightly to prevent worksurface from rising rapidly.
3. If lift mechanism still doesn't work, please contact us for further assistance.
4. If the lift mechanism keeps going up automatically, please contact us for further assistance.

