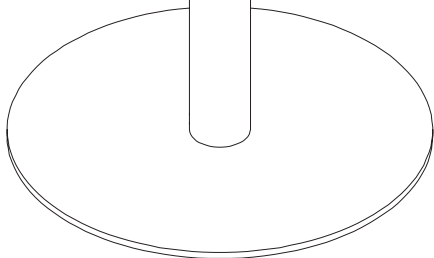
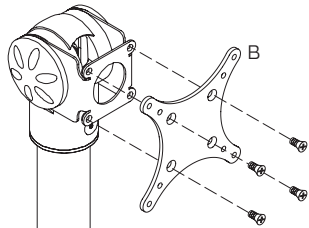
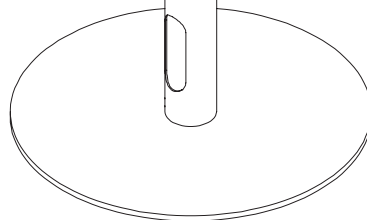
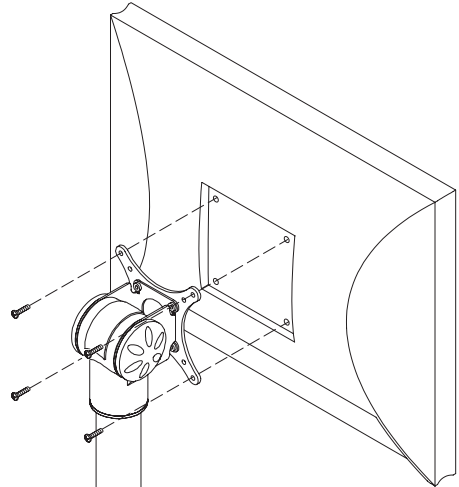


3

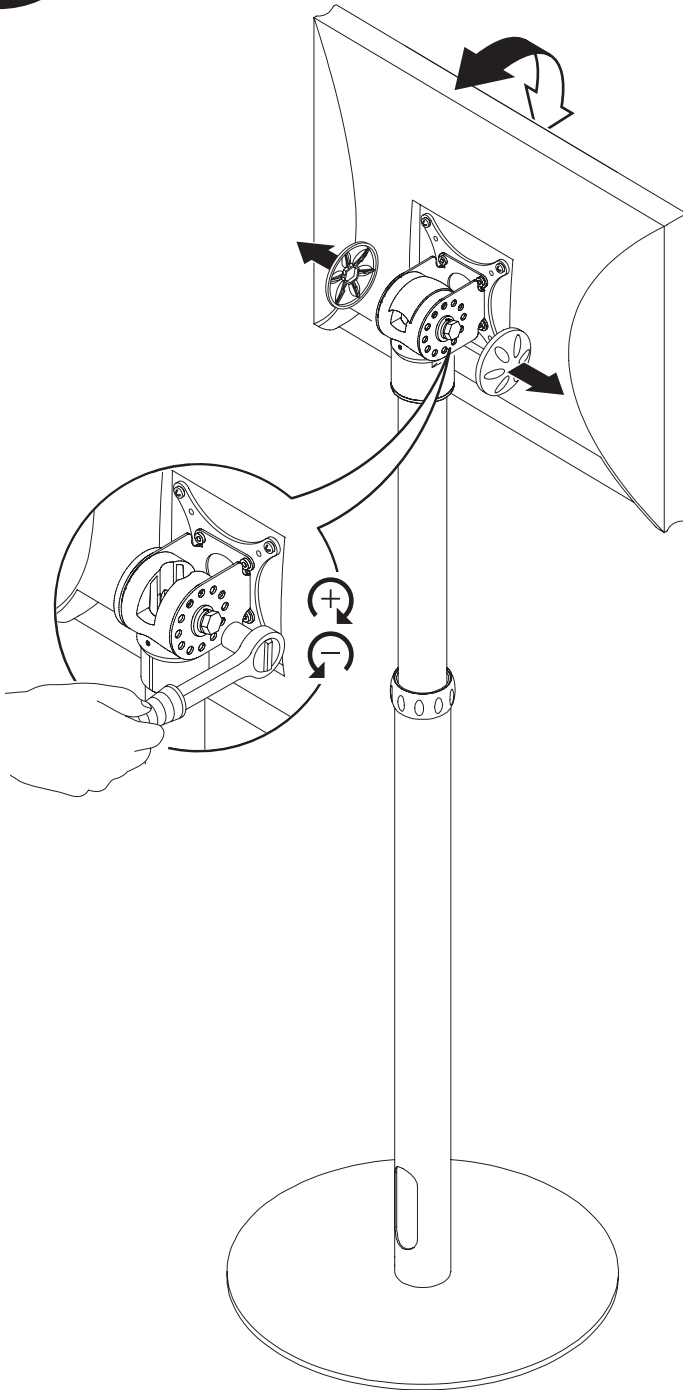


4

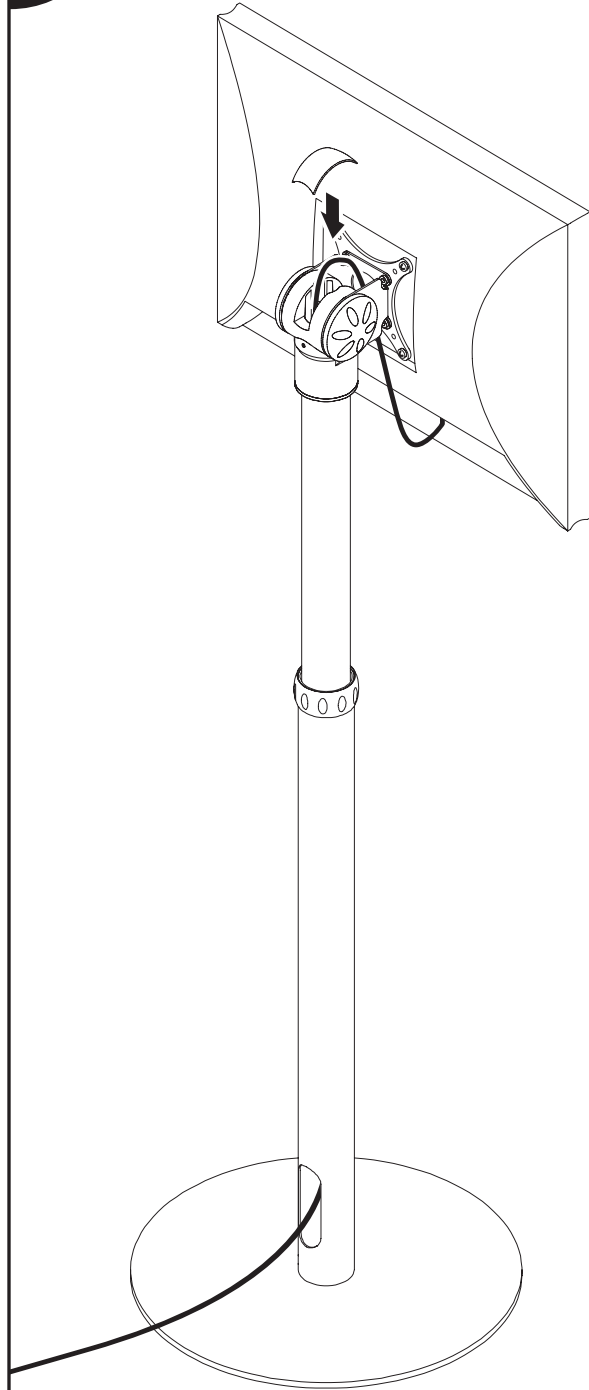


5

ADJUST AS NEEDED



6

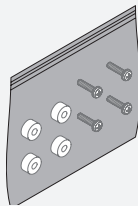
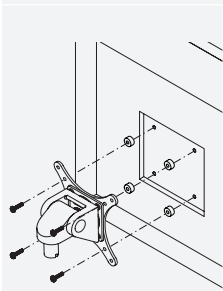


# PARTS LIST

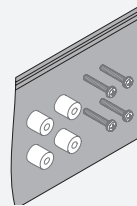
ITEM	DESCRIPTION / PART NO.	QUANTITY
A	1/4-20 x 1-1/4" FPhMS 710758	1
B	75/100mm VESA® Adapter Plate 105587	1

ITEM	DESCRIPTION / PART NO.	QUANTITY
C	10-32 x 3/8" Phillips Pan Head Screw 702281	1 (4-pack)
D	M4 x 12mm Phillips Pan Head Screw 702096	1 (4-pack)

**OPTIONAL SPACER KITS** The mounting surface on your monitor may be recessed further than permitted by VESA® standards. As a result, a spacer kit may be required.



**.25" Spacer Hardware Kit**  
 (4) .25" Spacers  
 (4) M4 x 18mm Phillips Pan Head Screws  
 Order # P404923-B



**.5" Spacer Hardware Kit**  
 (4) .5" Spacers  
 (4) M4 x 25mm Phillips Pan Head Screws  
 Order # P404923-C