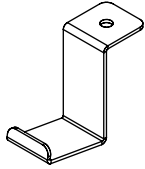


BH-X

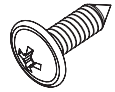
PARTS LIST

A



Bag Hook 1x
Black = R03341510
White = R03341504
Silver = R03341530

B



5 x 20mm Flat Head Wood Screw 1x
R011530

1 INSTALL BAG HOOK

Place the Bag Hook (A) on the underside of the worksurface, directly in front of the Frame Side Bar (model may vary).

Note: The Bag Hook can mount on either the left-hand or right-hand side based on the user's accessibility needs.

If mounting with a drawer (DR-SM-x-xx), we recommend mounting the hook on the opposite side of the desktop as the drawer.

Attach the Bag Hook (A) to the underside of the worksurface using the 5 x 20mm screw (B).

