



HAT  
COLLECTIVE™  
HEALTHCARE



PRODUCT CATALOG  
SECOND EDITION

# ERGONOMIC SOLUTIONS FOR BETTER HEALTHCARE.

At HAT Collective Healthcare, we are on a quest to empower individualization in the workplace through our collection of flexible, ergonomic solutions for the healthcare market.

## TABLE OF CONTENTS

- MEDICAL CARTS** ..... 6
- MONITOR ARMS** ..... 12
- WALL MOUNT SOLUTIONS** ..... 26
- SIT-STAND WORKSTATIONS** ..... 38
- ACCESSORIES**..... 46





# WHY CHOOSE HAT COLLECTIVE HEALTHCARE?



In the world of healthcare, lasting impressions are made at Point-of-Care (POC). These touchpoints should enable high-quality treatment, allowing the focus to remain on the patient. Instead of adapting healthcare to the technology, the technology should adapt to worker and patient needs.

## THE THREE C'S OF HEALTHCARE™



### COMFORT

Strenuous, non-ergonomic work environments contribute to musculoskeletal disorders and higher rates of employee dissatisfaction. User-centric, ergonomically designed POC products can drastically improve caregiver comfort, making these solutions essential for healthcare facilities.



### CONTROL

When it comes to POC, one size does not fit all. The ability to adjust and personalize equipment gives caregivers control of their environment, better enabling their important work. Thoughtfully designed POC products provide intuitive customization.



### CONFIDENCE

In a healthcare environment, dependability is everything. The average healthcare worker spends about half of their 12-hour shift using technology. Caregivers need to know that they can rely on their workstations to perform—and have confidence that they are built to last.

# MEDICAL CARTS

HAT Collective Healthcare's medical carts are designed for effortless mobility. Durable, compact, and easily maneuverable, these carts are ideal for working in space-constrained environments. Custom configurations support all types of capacity requirements, while electronic locking and audit trail software allow for seamless distribution of medication. Articulating keyboard trays and other add-on accessories accommodate all types of computer equipment, creating an ergonomic workspace for healthcare professionals on the go.

TANGO



Healthcare professionals will effortlessly take to the floor with their new workday partner, Tango. This cart does everything a caregiver does, but backward and on wheels. Tango is a compact, no-fuss tool with a world-class power system that is easy to use, maneuver, and configure. Discover all the features you need in this expertly-designed, ergonomic cart without the unnecessary frills.

FEATURES

- **Ergonomic:** Gas spring lift assists for effortless adjustment.
- **Organized:** Included track for mounting accessories and integrated cable management.
- **Integrated:** Built-in, forward-facing handles allow for easy maneuvering and control.
- **Retractable:** Keyboard tray and sliding left or right-handed mouse tray retracts when not in use (not available w/TNG-L-NP).
- **Adjustable:** User comfort is enhanced by single-hand height adjustment while standing or sitting.

SPECIFICATIONS

Finishes



Mobile Power Options

See page 9

Dimensions

Base: 19.2" W x 20" D  
Casters: 4" double wheels  
(2 non-locking, 2 locking)  
Worksurface Construction:  
Plastic  
Cart Sleeve & Base:  
Aluminum column, plastic base

Part Numbers

TNG-H-NP	Tango Laptop Cart w/Keyboard Tray
TNG-M-NP	Tango Cart w/Keyboard Tray & Monitor Mount
TNG-M-P	Tango Cart w/Keyboard Tray, Monitor Mount & Power

Accessories

TNG-BASKET	Basket
TNG-BIN	Small Bin
TNG-SHELF	Column Shelf

WARRANTY

Mechanical: 3 Years  
Power System: 2 Years

TANGO CONFIGURATIONS



TANGO LAPTOP CART w/KEYBOARD TRAY

**Worksurface Area:** 20" W x 12" D  
**Worksurface Height:** 35.4" - 47.2"  
**Keyboard Tray Size:** 17.8" W x 8.2" D  
**Keyboard Tray Height:** 30" to 41.8"  
**Part Number:** TNG-H-NP



**In-Between Spaces**

Tight spaces require innovative solutions. Our diverse selection of wall-mounted products provides easy access to medical records and pop-up surfaces for prep. When you're done, quickly stow your work area to leave hallways clear and open.







7000



7000 Dual increases your productivity with dual monitor support



Instantly raise and lower the monitor with one hand

This articulating monitor mount enables you to reclaim your desktop while you work in greater ergonomic comfort. Suspend your monitor above your desk and take advantage of this arm's 360 degrees of rotation.

Need to mount two screens? 7000 Dual, our productivity-enhancing dual monitor mount, allows you to effortlessly reposition both monitors with just one hand.

FEATURES

- **Space-Saving:** Folds to occupy only 3" of space.
- **Responsive:** One-touch monitor adjustment.
- **Flexible:** Easily rotate monitor for portrait or landscape viewing.
- **Quick-Install:** 7Installation is performed above desk for quick and easy set-up.
- **Compatible:** VESA-monitor compatible – 75mm & 100mm VESA adapter(s) included.

SPECIFICATIONS

Finishes

- Flat White 248
- Silver 124
- Vista Black 104

7000 Single

Screen Size: Up to 32"  
Height Adjustment: 16"  
Extension Range: 24"  
Max Monitor Height: 17"  
Weight Capacity: 3 – 28 lbs.  
Mount: Desk Edge, Grommet  
Compatibility: Up to 1.5" desk thickness

7000 Single Part Numbers

- 7000-500-\_\_\_ (3 – 10 lbs. monitor)
- 7000-800-\_\_\_ (10 – 22 lbs. monitor)
- 7000-1000-\_\_\_ (13 – 28 lbs. monitor)

7000 Dual

Screen Size: Up to 32"  
Height Adjustment: 16"  
Extension Range: 24"  
Max Monitor Height: 19.9"  
Weight Capacity: 3 – 22 lbs. per monitor  
Mount: Desk Edge, Grommet

7000 Dual Part Numbers

- 7000-2-500-SLD-\_\_\_ (3-10 lbs. per monitor)
- 7000-2-800-SLD-\_\_\_ (10-22 lbs. per monitor)

WARRANTY

10 Years





7500



The 7500 desk monitor mount features our patented HD tilter, a spring-assisted pivot for the monitor which makes adjustments remarkably easy, even with larger screens. Other features include internal cable management and unique joint bearings for ease of movement.

FEATURES

- **Effortless:** Instantly raise and lower your monitor with one handed repositioning.
- **Flexible:** Easily rotate flat panel monitor for portrait or landscape viewing.
- **Smooth:** Monitor arm includes our spring-assisted HD tilter for smoother monitor pivoting.
- **Adaptable:** Includes FLEXmount with six mounting options in one kit.
- **Compatible:** VESA-monitor compatible – 75mm & 100mm VESA adapter included.

SPECIFICATIONS

Finishes

- Flat White 248
- Silver 124
- Vista Black 104

Dimensions

Screen Size: Up to 43"  
Height Adjustment: 18"  
Extension Range: 27"  
Max Monitor Height: 19"  
Weight Capacity: 2 – 40 lbs.  
Mount: Desk Edge, Thru-Desk, Grommet, Wall, Reverse Wall, Side Bolt

Part Numbers

7500-500-\_\_ (2 – 13 lbs. monitor)  
7500-800-\_\_ (6 – 21 lbs. monitor)  
7500-1000-\_\_ (8 – 27 lbs. monitor)  
7500-1500-\_\_ (12 – 40 lbs. monitor)

WARRANTY

10 Years

Effortless height adjustment

Integrated cable management

Space saving design

7516



The monitor mount effortlessly controls your radial movement; simply grasp the handle and turn the monitor left or right – wherever you need it. Our cable management routes cables inside the monitor arm to keep your work area organized. You'll never work the old and cluttered way again.

FEATURES

- **Convenience:** Use handles to quickly reposition the monitor without touching the screen.
- **Flexible:** Arm articulates 360 degrees at 3 joints and tilts 200 degrees, allowing maximum flexibility.
- **Space-saving:** Arm can be folded to occupy just 3.6" of space.
- **Adaptable:** Includes FLEXmount with six mounting options in one kit.
- **Compatible:** VESA-monitor compatible – 75mm & 100mm.

SPECIFICATIONS

Finishes

- Flat White 248
- Silver 124
- Vista Black 104

Dimensions

Screen Size: Up to 24"  
Height Adjustment: 18"  
Extension Range: 27"  
Max Monitor Height: 19"  
Weight Capacity: .5 – 22.5 lbs.  
Mount: Desk Edge, Thru-Desk, Grommet, Wall, Reverse Wall, Side Bolt

Part Numbers

7516-800-\_\_ (.5 lbs. – 16.5 lbs. monitor)  
7516-1000-\_\_ (1.5 lbs. – 22.5 lbs. monitor)

WARRANTY

10 Years

Easily wrap handles in disposable plastic for sanitary use

Features convenient handle set to reposition monitor

7509



The 7509 data entry monitor arm is a remarkably flexible data entry workstation that also features a keyboard tray that can be folded flat when not in use and a slide-out mouse tray that accommodates left- or right-hand users.

FEATURES

- **Space-saving:** Keyboard tray can be folded flat when not in use.
- **Flexible:** Built-in mouse tray accommodates left- and right-handers. Angles of monitor and keyboard tray can be adjusted independently.
- **Integrated:** Cable management system routes cables entirely within monitor arm.
- **Adaptable:** Includes FLEXmount with six mounting options in one kit.
- **Compatible:** VESA-monitor compatible – 75mm & 100mm.

SPECIFICATIONS

Finishes

- Flat White 248
- Silver 124
- Vista Black 104

Dimensions

Screen Size: Up to 27"  
Height Adjustment: 18"  
Extension Range: 27"  
Weight Capacity: 6 – 23 lbs.  
Mount: Desk Edge, Thru-Desk, Grommet, Wall, Reverse Wall, Side Bolt

Part Numbers

7509-1000HY- \_ \_ \_

WARRANTY

10 Years

STAXX™



Designed for modularity, this groundbreaking display system can accommodate up to six monitors using a single mount. Staxx is a completely configurable pole-based solution allowing the addition of monitors by stacking more of the same parts on top of each other.

FEATURES

- **Scalable:** Easy to install and reconfigure.
- **Capable:** Mount large screens stacked or side by side.
- **Customizable:** Available in a wide range of sizes and configurations.
- **Adjustable:** Flexible extension arms provide easy positioning and personalized viewing angles.
- **Compatible:** VESA-monitor compatible – VESA adapter(s) included.

SPECIFICATIONS

Finishes

- Flat White 248
- Silver 124
- Vista Black 104

**Mount:** Desk Edge, Grommet  
**Compatibility:** Up to 1.5" desk thickness

See pages 26-27 for additional specs

WARRANTY

10 Years



Effortless height adjustment



Built-in mouse tray accommodates left- and right-handers



Space-saving design



Easily repositionable

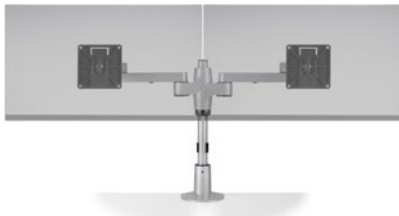
STAXX™ STANDARD CONFIGURATIONS



**STAXX SINGLE**  
**Screen Size:** Up to 50"  
**Weight Capacity:** Up to 30 lbs.  
**Part Number:** STX-01S-\_\_



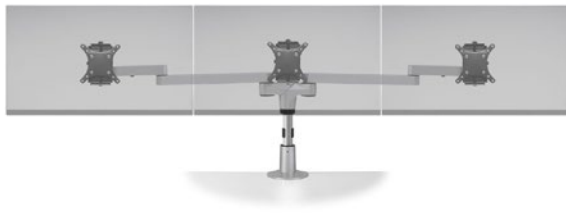
**STAXX ONE OVER ONE**  
**Screen Size:** Up to 30"  
**Weight Capacity:** Up to 20 lbs. per monitor  
**Part Number:** STX-11S-\_\_



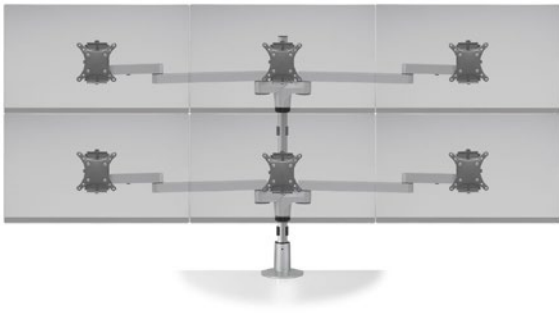
**STAXX DUAL**  
**Screen Size:** Up to 24"  
**Weight Capacity:** Up to 20 lbs. per monitor  
**Part Number:** STX-02S-\_\_



**STAXX TWO OVER TWO**  
**Screen Size:** Up to 24"  
**Weight Capacity:** Up to 15 lbs. per monitor  
**Part Number:** STX-22S-\_\_

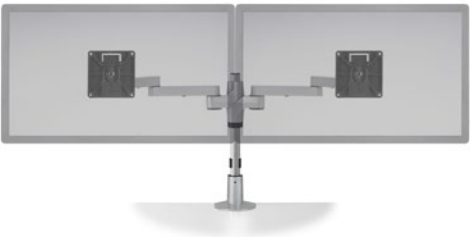


**STAXX TRIPLE**  
**Screen Size:** Up to 24"  
**Weight Capacity:** Up to 15 lbs. per monitor  
**Part Number:** STX-03S-\_\_

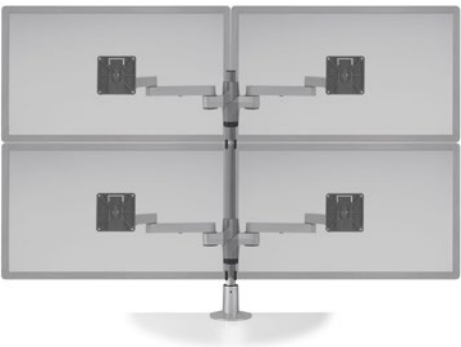


**STAXX THREE OVER THREE**  
**Screen Size:** Up to 24"  
**Weight Capacity:** Up to 10 lbs. per monitor  
**Part Number:** STX-33S-\_\_

STAXX™ WIDE CONFIGURATIONS



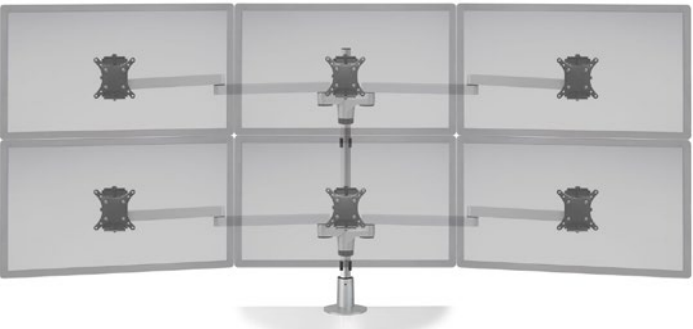
**STAXX DUAL WIDE**  
**Screen Size:** 24" - 30"  
**Weight Capacity:** Up to 20 lbs. per monitor  
**Part Number:** STX-02W-\_\_



**STAXX TWO OVER TWO WIDE**  
**Screen Size:** 24" - 30"  
**Weight Capacity:** Up to 15 lbs. per monitor  
**Part Number:** STX-22W-\_\_



**STAXX TRIPLE WIDE**  
**Screen Size:** 24" - 30"  
**Weight Capacity:** Up to 15 lbs. per monitor  
**Part Number:** STX-03W-\_\_



**STAXX THREE OVER THREE WIDE**  
**Screen Size:** 24" - 30"  
**Weight Capacity:** Up to 10 lbs. per monitor  
**Part Number:** STX-33W-\_\_

STAXX™ ARTICULATING



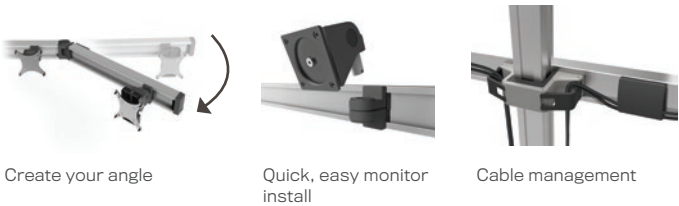
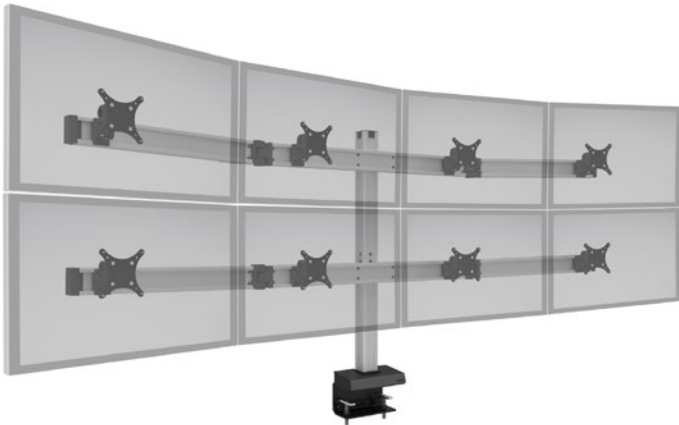
**STAXX DUAL ARTICULATING**  
**Screen Size:** Up to 27"  
**Weight Capacity:**  
10 - 23 lbs. per monitor (STX-450-\_\_)  
3 - 10 lbs. per monitor (STX-500-\_\_)  
7 - 17 lbs. per monitor (STX-600-\_\_)  
10 - 22 lbs. per monitor (STX-800-\_\_)  
13 - 28 lbs. per monitor (STX-1000-\_\_)



**STAXX DUAL ARTICULATING w/LAPTOP HOLDER**  
**Screen Size:** Up to 27"  
**Weight Capacity:**  
Monitor:  
10 - 23 lbs. (STX-450-8510-\_\_)  
3 - 10 lbs. (STX-500-8510-\_\_)  
7 - 17 lbs. (STX-600-8510-\_\_)  
10 - 22 lbs. (STX-800-8510-\_\_)  
13 - 28 lbs. (STX-1000-8510-\_\_)  
Laptop:  
3 - 13.5 lbs.



BILD®



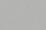
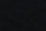
Create your angle      Quick, easy monitor install      Cable management

Bild is a highly configurable solution for multi-monitor applications. Configure your Bild – quickly and easily go from 2 to 16 plus monitors – all without wasting parts. Our Bild multi-monitor mount is an easily adjustable monitor mount solution offering an endless number of configurations for installing multiple monitors.

FEATURES

- **Robust:** Bild offers a robust, solid construction with a clean design aesthetic.
- **Controlled:** Monitor mount pivot points loosen and tighten to the desired rigidity using the tools included. Stored in the beam end cap, they are never out of reach.
- **Adjustable:** This multi-monitor mount takes the work out of adjusting and replacing monitors. Simply attach, adjust, and remove all at the face of the beam. No need to slide monitors to remove.
- **Organized:** Cleans up the workspace with cable clips in the column and beam that keeps cables organized and out of the way.
- **Compatible:** VESA-monitor compatible – 75mm & 100mm VESA adapters included.

SPECIFICATIONS

<b>Finishes</b>	<b>Mount:</b> Desk Edge
 Silver 124	See page 29 for additional specs
 Vista Black 104	

WARRANTY

10 Years

BILD® CONFIGURATIONS



**BILD DUAL**  
**Screen Size:** Up to 30"  
**Weight Capacity:** Up to 30 lbs. per monitor  
**Part Number:** BILD-2-CM-\_\_



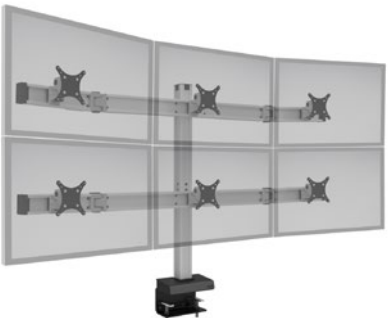
**BILD TRIPLE**  
**Screen Size:** Up to 24"  
**Weight Capacity:** Up to 30 lbs. per monitor  
**Part Number:** BILD-3-CM-\_\_



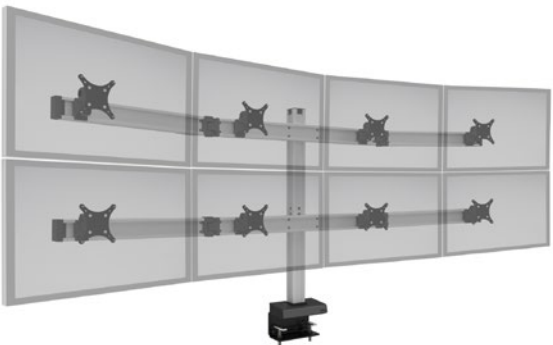
**BILD QUAD**  
**Screen Size:** Up to 24"  
**Monitor Weight:** Up to 30 lbs. per monitor  
**Part Number:** BILD-4-CM-\_\_



**BILD TWO OVER TWO**  
**Screen Size:** Up to 30"  
**Weight Capacity:** Up to 30 lbs. per monitor  
**Part Number:** BILD-2/2-CM-\_\_



**BILD THREE OVER THREE**  
**Screen Size:** Up to 24"  
**Weight Capacity:** Up to 30 lbs. per monitor  
**Part Number:** BILD-3/3-CM-\_\_



**BILD FOUR OVER FOUR**  
**Screen Size:** Up to 24"  
**Monitor Weight:** Up to 30 lbs. per monitor  
**Part Number:** BILD-4/4-CM-\_\_



**Exam Room**

Whether mounted to a desk, wall or cart, HAT Collective Healthcare's ergonomic monitor arms maximize performance and enhance workflow.





MINUT



When time is of the essence, take just a Minut. Minut is our innovative, pop-up workstation with integrated monitor arm. Perfect for caregivers on the move who need a quick moment to update a chart, check on labs or whatever work is necessary on the fly.

FEATURES

- **Stability:** Engineered for smooth adjustment and rock solid stability across its entire height range providing comfortable computing.
- **Ergonomic:** A manually-operated mechanism quickly adjusts height without the use of electric power.
- **Storable:** Tilt allows for a full vertical bend between top and column, making each desk easy to flip up and out of the way.
- **Integrated:** Built in mount allows the addition of a monitor arm for greater ergonomic comfort. Compatible monitor arms include our E2 Connex, 7000, and 3500 monitor arms (sold separately).
- **Secure:** A safety brake with integrated locking mechanism keeps the table in place.
- **A Safe Space™ Product:** Easily cleaned and disinfected between users.

SPECIFICATIONS

Finishes



**Height Range:** 30" - 46.5"  
(when mounted 3" above the floor)  
**Worksurface Shape:**  
Rectangular, Triangular  
**Worksurface Size:**  
Rectangular: 30.0" W x 23.5" D x 1.125" T  
Triangular: 31.3" W x 23.5" D x 1.125" T  
**Tilt:** 0° (stowed) or 90° (active)  
**Weight Capacity:**  
Rectangular: 12.9 - 27.9 lbs.  
Triangular: 17.5 - 32.5 lbs.  
(without monitor arm or technology weight)  
**Adjustability:** Constant Force Spring

Part Numbers

Wall Mount:  
HMT-ULP-W  
Worksurfaces:  
M1T-3024R-WMT-DWDW (Rectangular)  
M1T-3024T-WMT-DWDW (Triangular)

WARRANTY

Parts: 10 Years  
Craftsmanship: Lifetime



M-SERIES WALL MOUNT



Perfect for small spaces, hospitals, and lobbies, the Wall Mount delivers an ergonomic, height-adjustable touchdown area. Wall Mount is also available with added tilt for easy adjustability in a small mounting footprint.

FEATURES

- **Ergonomic:** A manually-operated mechanism quickly adjusts height without the use of electric power.
- **Storable:** Tilt allows for a full vertical bend between top and column, making each desk easy to flip up and out of the way.
- **Secure:** A safety brake with integrated locking mechanism keeps the table in place.
- **A Safe Space™ Product:** Easily cleaned and disinfected between users.

SPECIFICATIONS

Finishes

- ☐ White  
W
- ☐ Silver  
S
- ☐ Black  
B
- ☐ Mocha\*  
40

**Height Range:** 29.4" – 45.9"  
(including 1" thick surface and placed 3" above the floor)  
**Max Worksurface Width:** 20" – 48"  
**Max Worksurface Depth:** 18", 24"  
**Optional Tilt Angle:** 0°, 15°, 22.5°, 45°, 90°  
**Frame-Only Weight Capacity:**  
Supports a range of 15 – 60 lbs.  
(Column available in Ultralight and Light)  
**Adjustability:** Constant Force Spring

**Worksurface Finishes:** We proudly offer WilsonArt®, Pionite®, Nevamar® and Formica® laminates. Worksurface thickness is 1".\*\*

**Worksurface Edge Finishes:**  
We proudly offer Rehau edges.\*\*

WARRANTY

Parts: 10 Years  
Craftsmanship: Lifetime

\* Custom finishes require testing and longer lead times. Additional costs may apply.  
\*\* Extended lead times and pricing changes may apply for some laminates and custom edge finishes. Non-standard finishes subject to quote. Please speak with your rep for additional worksurface dimensions and specifications.



S-COLLECTION WALL MOUNTED



Wall Mounted takes all of the coveted features of our high-end electric desking solution and transforms it into a mounted worksurface. Choose your shape, finishes, and optional features and enjoy the benefits of height adjustability.

FEATURES

- **Adjustable:** Electric motor allows for a 250 lb. lift capacity, raising at 1.5" per second.
- **Smart:** Premium, hardware-based collision detection mitigates damage.
- **Certified:** Meets ANSI/BIFMA standards.
- **A Safe Space™ Product:** Easily cleaned and disinfected between users.

SPECIFICATIONS

Frame Finishes

- White  
W
- Silver  
S
- Black  
B

**Worksurface Finishes:** We proudly offer WilsonArt®, Pionite®, Nevamar® and Formica® laminates. Worksurface thickness is 1".\*

**Worksurface Edge Finishes:** We proudly offer Rehau edges.\*

**Worksurface Shape:** Rectilinear (Radius corners are standard on all worksurfaces)

SE, 2-Stage

Height Range: 30.1" – 48.6"  
(with 1.125"-thick worksurface and placed 3" above the floor)

SX, 3-Stage

Height Range: 25.2" – 51.7"  
(with 1.125"-thick worksurface and placed 3" above the floor)

- Adjustability:** Electric Control
- Speed:** 1.5" Per Second
- Frame-Only Weight Capacity:** 250 lbs.
- Max Power Draw:** 120 V, 60 Hz, 5 A
- Standby Power:** 0.1W
- Special Features:** Soft Stop
- Switch Options:** Up Down, Digital Switch, Personal Health Assistant Tracker

WARRANTY

Motor & Parts: 7 Years  
Craftsmanship: Lifetime

\* Extended lead times and pricing changes may apply for some laminates and custom edge finishes. Non-standard finishes subject to quote. Please speak with your rep for additional worksurface dimensions and specifications.

9110



9110



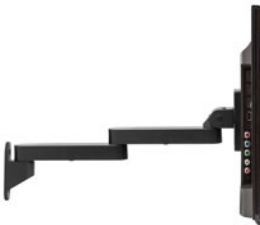
9110-4



9110-8.5



9110-8.5-4



9110-8.5-8.5

The 9110 wall mount is ideal for hanging your display to save maximum space. This flat panel wall mount allows pivot and tilt. You can add optional extender arms to allow even greater flexibility and range.

FEATURES

- **Adjustable:** This computer monitor and flat screen TV wall mount features adjustable tension at joints – ideal for touch-screen applications.
- **Easy:** Easily pivot the monitor from portrait to landscape.
- **Customizable:** Extend the wall mount with available 4" and 8" extension arms; they can also be combined to increase the extension over 17".
- **Compatible:** VESA-monitor compatible – 100mm quick-release VESA adapter included.

SPECIFICATIONS

Finishes

- Vista Black  
104

Dimensions

- Screen Size: Up to 43"
- Extension Range: 3.4" (9110)  
7.0" (9110-4)  
10.5" (9110-8.5)  
13.9" (9110-8.5-4)  
17.5" (9110-8.5-8.5)
- Weight Capacity: Up to 30 lbs. (9110)  
Up to 30 lbs. (9110-4)  
Up to 28 lbs. (9110-8.5)  
Up to 22 lbs. (9110-8.5-4)  
Up to 18 lbs. (9110-8.5-8.5)

Part Numbers

- 9110-\_\_ \_
- 9110-4-\_\_ \_
- 9110-8.5-\_\_ \_
- 9110-8.5-4-\_\_ \_
- 9110-8.5-8.5-\_\_ \_

WARRANTY

10 Years



WALL TRACK WORKSTATION  
w/COMBO ARM



The space-saving wall track with combo arm supports point of care connections. The flexible data-entry arm offers a supportive, intuitive workflow, for fast-paced work. The monitor and keyboard move together making it easy to reposition and store, improving patient care by making caregivers' jobs easier and more comfortable.

FEATURES

- **Comfortable:** Monitor and keyboard tray move together making it quick and easy to reposition.
- **Ergonomic:** Keyboard tray tilts up and down to protect wrists from injury.
- **Space-Saving:** The arm and keyboard tray can be folded flat against wall when not in use.
- **Organized:** Cables stay hidden behind cable channel keeping spaces clean and clutter-free.
- **Cleanability:** Easy-to-clean surfaces allows for thorough and efficient cleaning.
- **Compatible:** VESA-monitor compatible – 75 & 100mm VESA adapter included.

SPECIFICATIONS

Finishes

- Flat White 248
- Vista Black 104

Dimensions

Track Length: 31"  
Monitor Height Adjustment: 18"  
Monitor Weight Capacity: 6 – 23 lbs.  
Screen Size: Up to 27"  
Keyboard Tray Size: 19" L x 8" W (excludes mouse tray)

Part Number

HM-WT002-\_\_

Accessories

- 8335-SM-\_\_ Small CPU Holder
- 8335-MD-\_\_ Medium CPU Holder
- 8335-LG-\_\_ Large CPU Holder

WARRANTY

10 Years



Flexible positioning allows the keyboard tray and arm to fold flat against wall when not in use



Cables are routed through track and hidden behind cable channel



Optional CPU Holders available, can be mounted to wall track or directly to wall

WALL TRACK WORKSTATION  
w/MONITOR & KEYBOARD ARMS



Caregivers can work sitting or standing with everything they need with our flexible wall track workstation. Easily reposition your screen or keyboard up and down, side-to-side to keep eye contact with your patients. The monitor and keyboard are easy to reposition and store, improving patient care by making caregivers' jobs easier and more comfortable.

FEATURES

- **Control:** Monitor and keyboard arms move independently, offering the ultimate in flexibility.
- **Ergonomic:** Keyboard tray tilts up and down to protect wrists from injury.
- **Space-Saving:** The monitor arm and keyboard arm can be folded flat against wall when not in use.
- **Organized:** Cables stay hidden behind cable channel keeping spaces clean and clutter-free.
- **Cleanability:** Easy-to-clean surfaces allows for thorough and efficient cleaning.
- **Compatible:** VESA-monitor compatible – 75 & 100mm VESA adapter included.

SPECIFICATIONS

Finishes

- Flat White 248
- Vista Black 104

Dimensions

Track Length: 31"  
Monitor Height Adjustment: 16"  
Monitor Weight Capacity: 10 – 22 lbs.  
Screen Size: Up to 32"  
Keyboard Height Adjustment: 16"  
Keyboard Tray Size: 27" L x 11" W

Part Number

HM-WT004-800-\_\_

Accessories

- 8335-SM-\_\_ Small CPU Holder
- 8335-MD-\_\_ Medium CPU Holder
- 8335-LG-\_\_ Large CPU Holder

WARRANTY

10 Years



Cables are routed through track and hidden behind cable channel



Optional CPU Holders available, can be mounted to wall track or directly to wall

**Registration**  
Height adjustable wall mounts offer comfort and convenience for every user.







M-SERIES TRIPOD & QUAD



From team shift changes to individual care work, the M-Series Tripod and Quad allows for quick collaboration or supports individual activity. Each individual workstation has timesaving, pneumatic, height-adjustability for quick up and down movement. Perfect for the caregiver on-the-go.

FEATURES

- **Ergonomic:** Constant Force height adjustment makes it easy to work in comfort.
- **Integrated:** The clever worksurface shapes fit together to take up less space.
- **Secure:** A safety brake with integrated locking mechanism keeps the table in place.
- **A Safe Space™ Product:** Easily cleaned and disinfected between users.

SPECIFICATIONS

Finishes

- White  
W
- Silver  
S
- Black  
B
- Mocha\*  
40

**Worksurface Finishes:** We proudly offer WilsonArt®, Pionite®, Nevamar® and Formica® laminates. Worksurface thickness is 1".\*\*

**Worksurface Edge Finishes:** We proudly offer Rehau edges.\*\*

M-Tripod

Seats: 3  
Worksurface Angle: 120°  
Worksurface Weight: 45+ lbs.  
(Surface size contingent)

M-Quad

Seats: 4  
Worksurface Angle: 90°  
Worksurface Weight: 37+ lbs.  
(Surface size contingent)

**Height Range:** 27.6" - 44.1"  
(including 1" thick surface)

**Worksurface Size:** 36" - 40" x 18" - 24"

**Frame-Only Weight Capacity:**  
Supports a range of 15 - 80 lbs.  
(Column available in Ultralight, Light, Medium)

**Adjustability:** Constant Force Spring

**Wire Management:** Included

WARRANTY

Parts: 10 Years  
Craftsmanship: Lifetime

\* Custom finishes require testing and longer lead times. Additional costs may apply.

\*\* Extended lead times and pricing changes may apply for some laminates and custom edge finishes. Non-standard finishes subject to quote. Please speak with your rep for additional worksurface dimensions and specifications.



S-COLLECTION PANEL MOUNT



Caregiver stations have never been more efficient with the installation of a panel mounted or custom millwork desk solution. Allowing healthcare staff to adjust their workstation at a touch of a finger as well as move their monitor easily to read important patient information provides optimal ergonomics in a fast-paced, 24/7 environment.

FEATURES

- **Adjustable:** Electric motor allows for a 350 lb. lift capacity, raising at 1.5" per second.
- **Smart:** Premium, hardware-based collision detection mitigates damage.
- **Safe:** Brackets keep the table in a fixed lateral position, maintaining important pinch gaps around the perimeter of the desk to avoid damage or injury.
- **A Safe Space™ Product:** Easily cleaned and disinfected between users.

SPECIFICATIONS

Frame Finishes

- White  
W
- Silver  
S
- Black  
B

**Worksurface Finishes:**  
We proudly offer WilsonArt®, Pionite®, Nevamar® and Formica® laminates. Worksurface thickness is 1.125".\*

**Worksurface Edge Finishes:**  
We proudly offer Rehau edges.\*

**Worksurface Shape:** Rectilinear  
(Radius corners are standard on all worksurfaces)

**SE, 2-Stage**  
Height Range: 27.1" - 45.6"

**SX, 3-Stage**  
Height Range: 22.2" - 48.7"

**Adjustability:** Electric Control

**Speed:** 1.5" Per Second

**Weight Capacity:** 350 lbs.

**Max Power Draw:** 120 V, 60 Hz, 5 A

**Standby Power:** 0.1W

**Special Features:** Soft Stop

**Switch Options:** Up Down, Digital Switch, Personal Health Assistant Tracker

WARRANTY

Motor & Parts: 7 Years  
Craftsmanship: Lifetime

\* Extended lead times and pricing changes may apply for some laminates and custom edge finishes. Non-standard finishes subject to quote. Please speak with your rep for additional worksurface dimensions and specifications.

HAT GROUP & CONFERENCE TABLE



Team meetings may be long, but they don't have to be painful. This four-legged electric conference base means even shared workspaces can transition from sit to stand.

Improve the productivity of your team sessions with this impressively large height-adjustable electric base. Expandable widths and multiple worksurface options ensure the right fit for your space.

FEATURES

- **Integrated:** Includes programmable four-position LED handset and cable manager.
- **Electric Lift:** Quad-sync motors allow for a 350 lb. lift capacity, which raises at 1.2" per second.
- **Smart:** Anti-collision safety sensor prevents accidents.
- **A Safe Space™ Product:** Easy to wipe down and disinfect between users.

SPECIFICATIONS

Finishes	Dimensions
<div><div></div>Black BK</div>	Height Range: 27.25" - 46.75" Width Options: 42" - 74"
<b>Part Numbers</b> HAT4-MID-L- _ _	

WARRANTY

Motor & Parts: 7 Years  
Craftsmanship: Lifetime





**Caregiver's Station**  
HAT Collective Healthcare's sit-stand workstations are designed with the flexibility and durability that 24/7 care environments can depend on.





DOCKING STATION



FEATURES

- **Compatible:** Cross platform compatibility – works with both Mac and PC.
- **Portable:** Fits easily into your laptop bag for portable connectivity.
- **Power:** Provides steady power for quick-charge to compatible devices.
- **Flexible:** Optional VESA and clamp mounts available for a clutter-free workspace.

SPECIFICATIONS

Finishes

Black  
BLK

Part Numbers

DS-1-BLK (Docking Station Only)  
DS-1-CM-BLK (with Clamp Mount)  
DS-1-VM-BLK (with VESA Mount)

**Compatibility:** Mac and PC  
**Dimensions:** 3.75" W x 3.75" D x 1.33" H  
**Docking Interface:** USB-C 3.1  
**Interfaces:** (2) HDMI 1.4, (3) USB-A 3.1 Gen 1, (1) RJ45 Port, (1) Audio Jack In/Out  
**Single Display Resolution:** 2560 x 1440 @ 50Hz  
**Dual Display Resolution:** 1920 x 1080 @ 60Hz  
**Audio:** 2.1 Channel  
**Ethernet:** Type 10/100/100 Base-T  
**PD Charging:** 85W  
**Power Adapter:** AC 100/240V

WINSTON MAT



FEATURES

- **Support:** This durable anti-fatigue mat delivers deep-cushion comfort and supports your feet and joints.

SPECIFICATIONS

Finishes

Black  
BLK

**Dimensions:** 36" W x 24" D x .75" H  
**Material:** Commercial grade, heavy-duty polyurethane.  
**Part Numbers**  
WNST-MAT

KEYBOARD TRAY



FEATURES

- **Seamless:** Short track seamlessly integrates with height-adjustable bases.
- **Easy:** Soft touch knob adjusts tilt.
- **Flexible:** Mouse pad can be repositioned to the left or right hand side.

SPECIFICATIONS

Finishes

Black

**Keyboard Tray Size:** 27" x 10"  
**Track Length:** 11"  
**Tilt Adjustment:** +10/-10 degrees  
**Swivel:** 360 degree

Part Numbers

KT-27

CPU HOLDERS



FEATURES

- **Space-Saving:** Adjustable CPU holders save space by securing CPU's under the desk.

SPECIFICATIONS

Finishes

Black  
BLK

**Compatibility:** Supports computers 11.8" – 21" high, 3.5" – 8" deep  
**Weight Capacity:** Up to 22 lbs.  
**Mount:** Attaches under desk

Part Numbers

CPU-HLDR-1-BLK  
CPU-HLDR-2-BLK (Includes 11" Track)

**Patient Room**

Avoid clutter and access patient information with ease, never letting equipment get in the way of exceptional patient care.





MONITOR ARMS



	7000 (p 14)	7500 (p 16)	7516 (p 17)	7509 (p 18)
Screen Size	Up to 32"	Up to 43"	Up to 24"	Up to 27"
Weight Capacity	2 – 30 lbs.	2 – 40 lbs.	.5 – 22.5 lbs.	6 – 23 lbs.
Height Adjustment	16"	18"	18"	18"
Extension Range	24"	27"	27"	27"
Finishes	Flat White, Silver, Vista Black	Flat White, Silver, Vista Black	Flat White, Silver, Vista Black	Flat White, Silver, Vista Black
Dual Monitor Option	Yes	Yes	No	No
Multi-Monitor (3+)	No	No	No	No
Mount Configurations	Desk Edge, Grommet	Desk Edge, Thru-Desk, Grommet, Wall, Reverse Wall, Side Bolt	Desk Edge, Thru-Desk, Grommet, Wall, Reverse Wall, Side Bolt	Desk Edge, Thru-Desk, Grommet, Wall, Reverse Wall, Side Bolt
Warranty	10 Years	10 Years	10 Years	10 Years

MONITOR ARMS



	Staxx (pp 19-21)	Bild (pp 22-23)
Screen Size	Up to 30"	Up to 30"
Weight Capacity	Varies	Up to 30 lbs. per monitor
Height Adjustment	Adjustable in 1" increments on pole	Adjustable anywhere on column
Extension Range	Varies	Varies
Finishes	Flat White, Silver, Vista Black	Silver, Vista Black
Dual Monitor Option	Yes	Yes
Multi-Monitor (3+)	Yes	Yes
Mount Configurations	Desk Edge, Grommet	Desk Edge
Warranty	10 Years	10 Years



HAT Collective Healthcare  
100 Kuebler Road  
Easton, PA 18040

800 524 2744  
[hathealthcare.com](https://hathealthcare.com)

