



E2

MONITOR ARMS



HAT
COLLECTIVE™
HUMAN ACTIVE TECHNOLOGY

SLEEK DESIGN. MAXIMUM FLEXIBILITY.

An evolution in ergonomics. Introducing “E2”, the next generation of the original Envoy monitor arm. E2 offers a polished design with maximum flexibility for user screen interaction. With a recent study citing 24% of workers experience neck pain, the E2 seeks to optimize user performance and adjustment control while eliminating the strain on neck muscles.



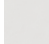

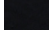
With a fast and easy install, quick release tilter and featured sliders on the dual arm, the E2 proves to be the ideal monitor arm for both home and office environments.

FEATURES

- **Sleek:** Clean lines and a modern silhouette provide a stylish profile for either home or office.
- **Ergonomic:** Allows monitors to be placed at an ergonomically correct distance from the user's eyes to increase comfort and productivity no matter where a person is working.
- **Dynamic:** Portrait-to-landscape rotation feature reduces stress on the neck and shoulders.
- **Compatible:** VESA-monitor compatible – 100mm VESA adapters included.

SPECIFICATIONS

Finishes

	Flat White 248
	Silver 124
	Vista Black 104

E2 Single

Screen Size: Up to 81.2 cm
 Height Adjustment: 33.7 cm
 Extension Range: 60.2 cm
 Max Monitor Height: 52.3 cm
 Weight Capacity:
 Flat Panel: 1 – 9 kg
 Curved: 7.2 kg
 Mount: Top down mount (Desk Edge, Grommet)

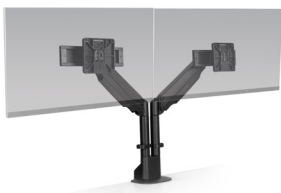
Compatibility:
 Up to 3.8 cm desk thickness

E2 Dual

Screen Size: Up to 68.5 cm
 Height Adjustment: 33.0 cm
 Width Adjustment Range:
 44.4 – 72.3 cm
 Max Monitor Height: 46.9 cm
 Weight Capacity:
 1 – 9 kg per monitor
 Mount: Top down mount: Desk Edge, Grommet
 Compatibility:
 3.8 cm desk thickness

Part Numbers

E2-1-__
 E2-2-__



Dual arm features slides for maximum adjustability



Cable management allows for a clutter-free workspace

WARRANTY

10 Years