



## DUAL ENVOY

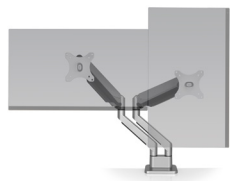
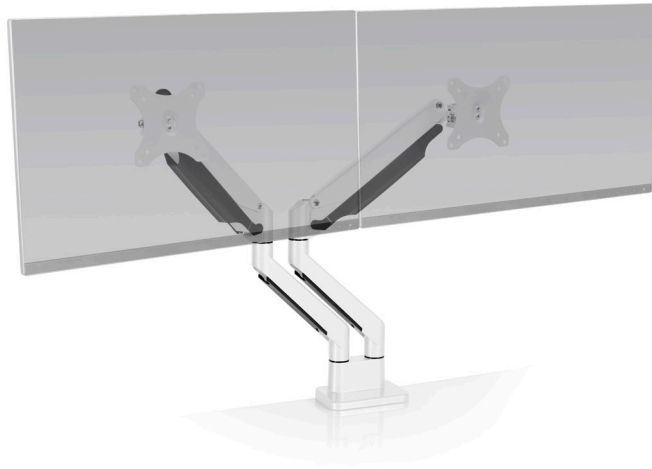
MONITOR ARMS



HAT  
DESIGN WORKS™  
HUMAN ACTIVE TECHNOLOGY

# EFFORTLESS ADJUSTMENT.

This powerful articulating arm gives you control of your comfort with one-touch monitor adjustment. Reclaim your desktop with the sleek cable management system and a mount system that is easy to install.



Space-saving design



Integrated cable management

## FEATURES

- **Balanced:** Tension adjustment at each joint allows for seamless counterbalance.
- **Responsive:** One-touch monitor adjustment.
- **Flexible:** Swivels, tilts and rotates from portrait to landscape.
- **Quick-Install:** Detachable, quick-install VESA plate reduces installation time.
- **Compatible:** VESA-monitor compatible – 75mm & 100mm VESA adapters included.

## SPECIFICATIONS

### Finishes



### Dimensions

Screen Size: Up to 32"  
 Height Adjustment: 13.2"  
 Extension Range: 23.7"  
 Max Monitor Height: 19.9"  
 Weight Capacity: 2.2 - 19 lbs. per monitor  
 Mount: Desk Edge, Grommet  
 Compatibility: 0.4" - 3.3" desk thickness

### Part Numbers

ENVOY-2-\_-\_-

## WARRANTY

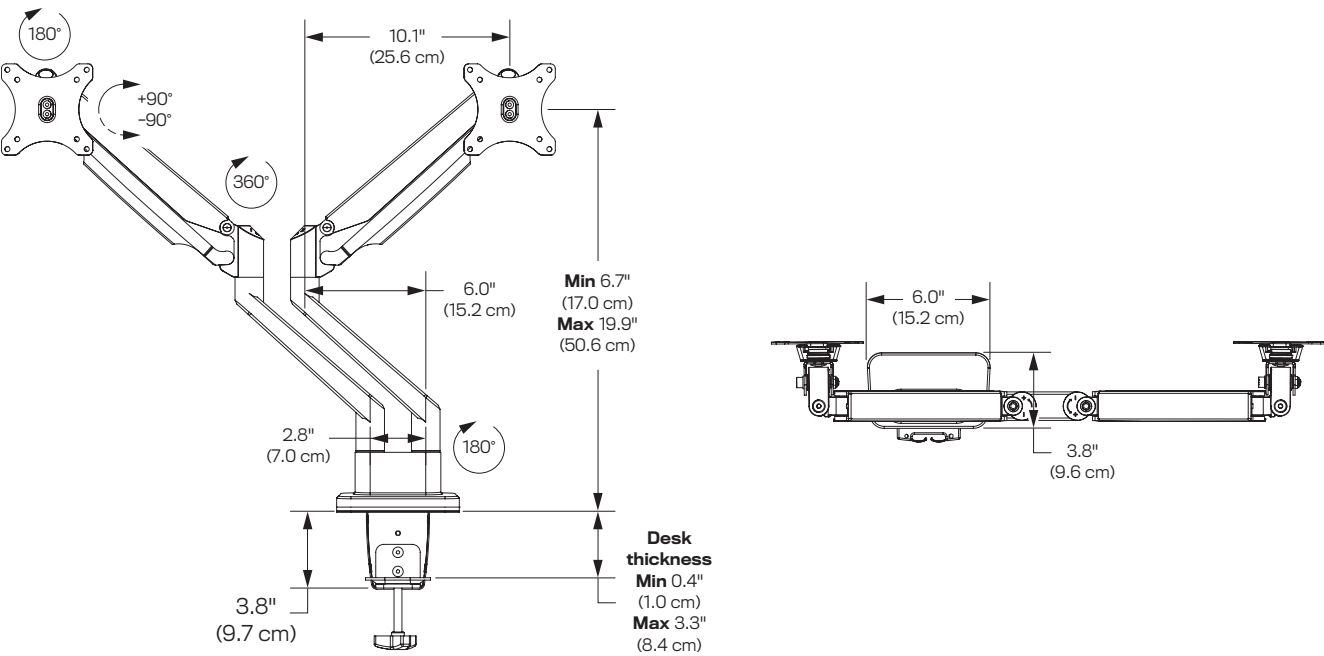
10 Years



**HAT**  
 DESIGN WORKS™  
 HUMAN ACTIVE TECHNOLOGY

800 524 2744 hatdw.com

CAPABILITIES



Desk Edge



Thru-Desk

