



# STAXX™

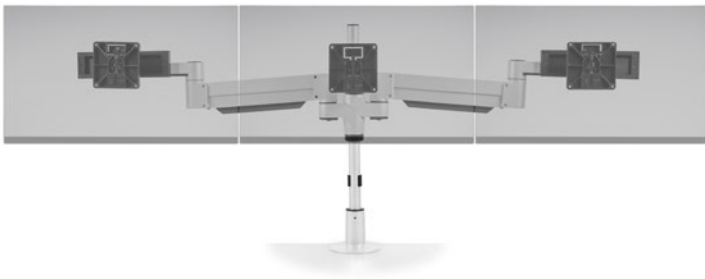
MONITOR ARMS



HAT  
COLLECTIVE™  
HUMAN ACTIVE TECHNOLOGY

## MODULAR FLEXIBILITY.

Designed for modularity, this groundbreaking display system can accommodate up to six monitors using a single mount. Staxx™ is a completely configurable pole-based solution allowing the addition of monitors by stacking more of the same parts on top of each other.



---

### FEATURES

- **Scalable:** Easy to install and reconfigure.
- **Capable:** Mount large screens stacked or side by side.
- **Customizable:** Available in a wide range of sizes and configurations.
- **Adjustable:** Flexible extension arms provide easy positioning and personalized viewing angles.

---

### SPECIFICATIONS

#### Finishes

Flat White  
248

Silver  
124

Vista Black  
104

**Mount:** Desk Edge, Grommet

**Compatibility:** Up to 3.81 cm desk thickness

See pages 3-5 for additional specs

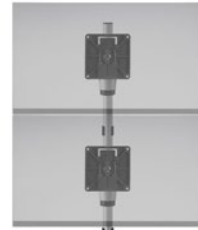
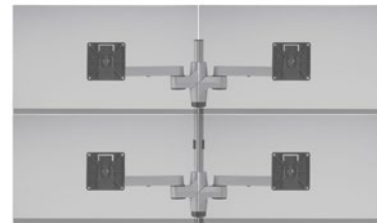
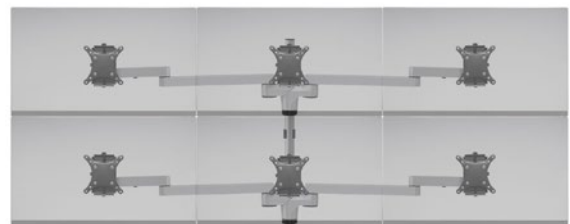
---

### WARRANTY

10 Years

## STAXX STANDARD

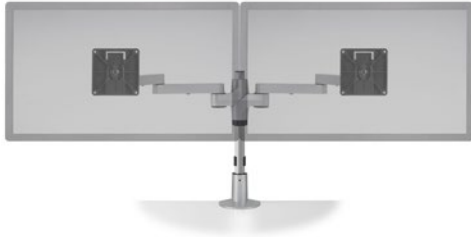
---

**STAXX SINGLE****Screen Size:** Up to 127 cm**Weight Capacity:** Up to 13.6 kg**Part Number:** STX-01S-\_\_**STAXX ONE OVER ONE****Screen Size:** Up to 76.2 cm**Weight Capacity:** Up to 9 kg per monitor**Part Number:** STX-11S-\_\_**STAXX DUAL****Screen Size:** Up to 60.96 cm**Weight Capacity:** Up to 9 kg per monitor**Part Number:** STX-02S-\_\_**STAXX TWO OVER TWO****Screen Size:** Up to 60.96 cm**Weight Capacity:** Up to 6.8 kg per monitor**Part Number:** STX-22S-\_\_**STAXX TRIPLE****Screen Size:** Up to 60.96 cm**Weight Capacity:** Up to 6.8 kg per monitor**Part Number:** STX-03S-\_\_**STAXX THREE OVER THREE****Screen Size:** Up to 60.96 cm**Weight Capacity:** Up to 4.5 kg per monitor**Part Number:** STX-33S-\_\_

**HAT**  
**COLLECTIVE™**  
HUMAN ACTIVE TECHNOLOGY

408 437 8770 [hatcollective.com](https://hatcollective.com)

## STAXX WIDE



### STAXX DUAL WIDE

**Screen Size:** 60.96 cm – 76.2 cm

**Weight Capacity:** Up to 9 kg per monitor

**Part Number:** STX-02W-\_\_\_



### STAXX TWO OVER TWO WIDE

**Screen Size:** 60.96 cm – 76.2 cm

**Weight Capacity:** Up to 6.8 kg per monitor

**Part Number:** STX-22W-\_\_\_

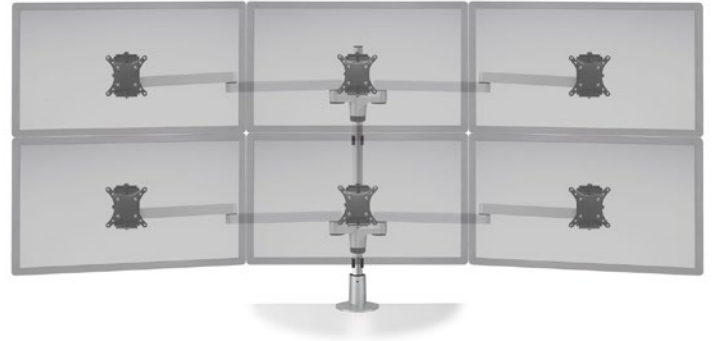


### STAXX TRIPLE WIDE

**Screen Size:** 60.96 cm – 76.2 cm

**Weight Capacity:** Up to 6.8 kg per monitor

**Part Number:** STX-03W-\_\_\_



### STAXX THREE OVER THREE WIDE

**Screen Size:** 60.96 cm – 76.2 cm

**Weight Capacity:** Up to 4.5 kg per monitor

**Part Number:** STX-33W-\_\_\_

## STAXX ARTICULATING



### STAXX DUAL ARTICULATING

**Screen Size:** Up to 68.58 cm

**Weight Capacity:**

- 4.5 – 10.4 kg per monitor (STX-450-\_\_\_)
- 0.9–5.9 kg per monitor (STX-500-\_\_\_)
- 2.7–7.7 kg per monitor (STX-600-\_\_\_)
- 3.4–11.3 kg per monitor (STX-800-\_\_\_)
- 5.4–11.3 kg per monitor (STX-1000-\_\_\_)



### STAXX DUAL ARTICULATING w/LAPTOP HOLDER

**Screen Size:** Up to 68.58 cm

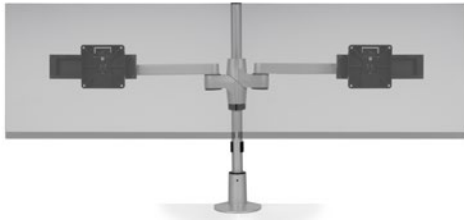
**Weight Capacity:**

- Monitor:
- 4.5 – 10.4 kg (STX-450-8510-\_\_\_)
- 0.9–5.9 kg (STX-500-8510-\_\_\_)
- 2.7–7.7 kg (STX-600-8510-\_\_\_)
- 3.4–11.3 kg (STX-800-8510-\_\_\_)
- 5.4–11.3 kg (STX-1000-8510-\_\_\_)

- Laptop:
- 1.4–6.1 kg (all sku's)

## STAXX WITH SLIDERS

---

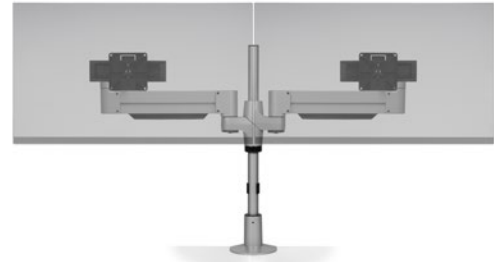


### STAXX DUAL WITH SLIDERS

**Screen Size:** Up to 68.58 cm per monitor

**Weight Capacity:** Up to 9 kg per monitor

**Part Number:** STX-02-SLD-\_\_

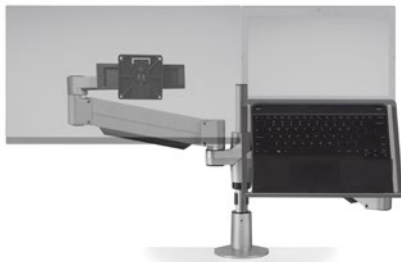


### STAXX DUAL ARTICULATING WITH SLIDERS

**Screen Size:** Up to 68.58 cm per monitor

**Weight Capacity:** Up to 9 kg per monitor

**Part Number:** STX-2-800-SLD-\_\_



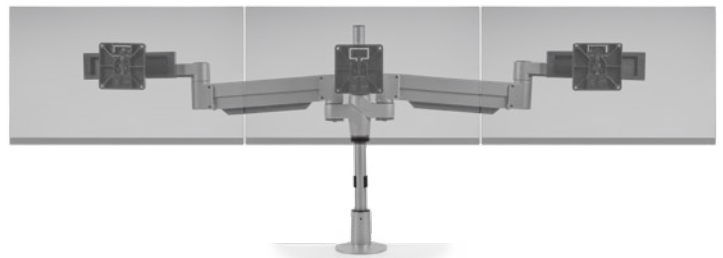
### STAXX DUAL ARTICULATING w/LAPTOP HOLDER AND SLIDER

**Screen Size:** Up to 68.58 cm per monitor

**Weight Capacity:** Up to 9 kg per monitor

Laptop: 1.4-6.1 kg

**Part Number:** STX-2-800-8510-\_\_



### STAXX TRIPLE ARTICULATING WITH SLIDERS

**Screen Size:** Up to 68.58 cm per monitor

**Weight Capacity:** Up to 9 kg per monitor

**Part Number:** STX-3S-800-\_\_